

CAPPING MEMBRANES

Cover-Up is a reinforced geomembrane made of HDPE textile coated on both sides with a layer of LDPE. It is impermeable to liquids and gases, U.V. stabilized, rot-proof, and resistant to puncture. It is supplied in large pre-welded panels up to 6000 sqm and very light which decreases the installation costs.

Net-Down is an anchoring HDPE geo-net for covering of landfills which is designed to resist the wind suction forces acting on the waterproofing geomembranes such that it will safely resist to the most extreme wind conditions.

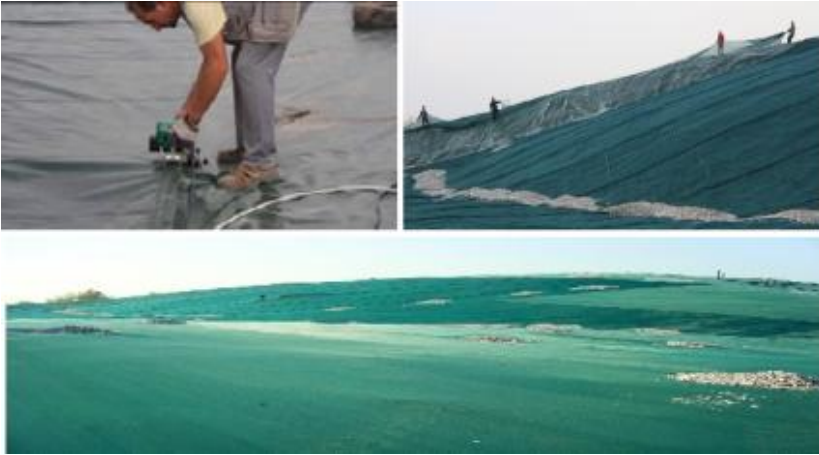
Cover-Up membranes are used in more than 24 countries for 25 million sqm landfill coverage.

Advantages of Cover-Up Membranes:

- Reduction of the leachate (up to 70%)
- Increasing the collection and quality of biogas
- Eliminates odours and dust

Application areas:

- Temporary, definitive or daily waterproof covering of landfills
- Rehabilitation of landfills
- Waterproofing lining of reservoirs, ponds, canals and any other application suitable for water and gas containment
- Floating covers



convex is the sole agent of G&G Partners S.r.l. in Turkey.